

Peer Exchanges for Joint Learning and Co-creation

Habu and Eretsha; Demonstration Sites for Scaling Country Efforts

With 2 years of lessons learned from implementation, CLAWS (Eretsha) and Wild Entrust (Habu) recently hosted Field Area Managers of the *CI Botswana GCF Project: Ecosystem Based Adaptation and Mitigation in Botswana's Communal Rangelands* to demonstrate the Herding4Health programme in action, as well as community engagement on Conservation Agreements.

The GCF project will be replicating and scaling the Pro-nature Enterprises Project's rangeland restoration interventions in the Bobirwa, Kgalegadi and Ngamiland districts across 104 villages over an 8-year project period.



Cross-national learning exchange

Conservation South Africa (CSA) recently shared their long experience in Conservation Agreements to Wild Entrust. Lerato Mogane (CSA Stewardship Coordinator) travelled to Botswana to mentor Wild Entrust team through the process of negotiating the agreements. This hands-on collaboration is being replicated across the project sites in order to strengthen commitment to conservation actions by communities.

Enterprising Opportunities in Lower Zambezi



CLZ (Conservation Lower Zambezi), through its partner, Prospero Zambia, recently completed an enterprise scoping exercise. The team spent a week with communities in the Chiawa GMA to learn about enterprising interests, as well as identify nature friendly enterprises..

Based on the data collected, business cases will be developed to drive some key activities in 2023, with a strong focus on interventions to support businesses and facilitate investment opportunities. The support will serve as an incentive for communities to engage in conservation agreements and nature-friendly enterprises.

PARTNER SPOTLIGHT:

Botswana Cattle Farmers Make Sale Under CBT Protocols

16 Cattle farmers from Eretsha and Habu, recently generated almost \$20 000 of sales of 49 cattle to the Botswana Meat Commission. This hefty milestone would otherwise not be achieved since the areas are designated Foot & Mouth Disease red zone thus cattle from the area cannot access the market without going through expensive quarantine process.

Communities through technical support of CLAWS and Wild Entrust teams have now been empowered to implement Commodity Based Trade (CBT) protocols on site, including livestock quarantine. This game-changing intervention is made possible through support by different projects including; Pro-nature Enterprises Project, European Union – Commodity Based Trade project, Herding4Health Sustainable Wildlife Management project and the Botswana Department of Veterinary Services.





Conservation South Africa -

Kruger2Canyons (South Africa)

- Number of cattle currently in the program: **8675**
- Total number of hectares under planned grazing system: **16672 ha**
- Total Conservation Agreements (CAs) signatories (**395 farmers, 291M:104F**). CA draft under review for Clare B and Eglington
- **5 sales** this quarter: Phiring, 5 sellers, 11 cattle sold (R60,800); Malaeneng 6 sellers, 8 cattle (R54,300); Utah, 8 sellers, 24 cattle (R128,698); Welverdiend, 7 sellers, 18 cattle sold (R107,439); Clare village, 7 sellers, 13 cattle (R89,528), Total sales were **\$25,000**.
- **40 (13F:17M)** new Yes4Youth appointed in 4 expansion villages (5/village).
- Developing **business plans for the 3** enterprises (Hlayisani BBC, Vukimamusi Arts & Craft and EatFresh Pty Ltd)
- **Governance strengthening** for 8 livestock farmers co-ops



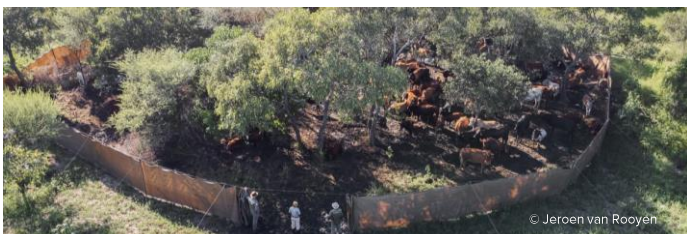
Communities Living / Wildlife Sustainably (CLAWS) – Eretsha (Botswana)

- Number of cattle currently in the program: **607**
- Total number of hectares under planned grazing system: **5 700ha**
- Number of participating farmers **27 (22M 5F)**
- 6 eco-rangers (3M 3 F), 2 Farmers (1M 1F) and 2 potential eco-rangers(M) received Primary Animal Health Care training
- Botswana Animal Information & Traceability System (BAITS) agent office completed and electrified.
- **25 Cattle** sold through the pilot EU-CBT project, generating over **\$9,000**



Conservation Lower Zambezi – Lower Zambezi (Zambia and Zimbabwe)

- Enterprise scoping work commenced, and 3 priority business cases identified
- Second cross-border collaborative meeting (Zambia – Zimbabwe) was conducted
- 6 joint river patrols undertaken with Dept. of Fisheries leading to increased issuance of licences
- Supported the Chiawa Community Resources Board participate in various national forums



© Jeroen van Rooyen



Wild Entrust – Habu (Botswana)

- Number of cattle currently in the program: **455**
- Total number of hectares under planned grazing system: **7,500ha**
- Number of participating farmers **82 (67M 15F)**
- Gweedao and Ntswirii clusters concluded organising their structure and enrolled a total of 110 cattle.
- Enrolled **14 (13M, 1F)** Volunteer ecorangers.
- **24 Cattle** sold through the pilot EU-CBT project, generating almost **\$9,000. 10 (7M:3F)**
- Successfully negotiated and designed the first CA, currently drafting final agreement
- Facilitated Crop Production training for the Vegetable Garden.



Peace Parks Foundation – Simalaha Community Conservancy (Zambia)

- Number of cattle currently in the program: **902**
- Currently have **83 farmers (4F:79M)** signed up as participating farmers
- 4 Grazing area committees formed with 4 active joint herds
- No livestock lost to predators in the joint herds
- 26 tents for eco-rangers procured and issued

Upcoming Activities

- Continuation of developing tailored interventions for Enterprise Development Opportunities
- On-boarding of the Implementing Partner for Eastern Cape site (Indalo Inclusive)
- Baseline data collection (Social and Ecological) in Lower Zambezi
- CA feasibility Analysis in Kanyemba, Zimbabwe
- Baseline Ecological Data Collection in Simalaha.
- Virtual Project Steering Committee Meeting (17th February)

Contact: [Lena Kedukaetswe](mailto:Lena.Kedukaetswe@conservation.org) | lkedukaetswe@conservation.org

