

PRO-NATURE ENTERPRISES FOR THE PEOPLE OF SOUTHERN AFRICA

Year 2 Quarter 2

Scoping for Pro-Nature Enterprises Commence

The project has officially launched the enterprise development strategy, kickstarting the identification and support for nature-friendly enterprises across the project sites. The targeted sectors include livestock, fisheries, ecotourism, sustainable agriculture, natural products etc.

Scoping for potential enterprises has commenced in Kruger-to-Canyons (K2C), Habu and Eretsha. Three pilot enterprises have already been selected in K2C to undergo a needs analysis.



People will conserve natural resources that are directly linked to their quality of life – including income opportunities. Pro-nature enterprises are anchored on conservation outcomes. Technical assistance support towards nature-friendly approaches and investment-readiness will be provided to contribute to and improve sustainable economic activities.

Equipped to Lead Land Restoration Activities



Sustainable solutions require equipping community members to undertake key roles that perpetuate interventions beyond project life. Uahorekua Godlop & Utatumisa Marenga from Habu (Botswana) as well as Paul Dube & Kutlwano Tshoko from Eretsha (Botswana), are among the recent graduates of the *Basic Eco-ranger Course* at the Southern African Wildlife College in South Africa.

In many places across Africa livestock herding has been left to the people who get left behind; those who didn't or couldn't go to school, and who couldn't find other ways to make a living. This course develops a career path for passionate and committed individuals who want to improve the health and productivity of the livestock, wildlife, people and landscapes around them.

Having enrolled on modules including *Holistic Rangeland Principles, First Aid, Stakeholder Engagement, Animal Health, and Wildlife Contact Management*, the 4 graduates are well equipped for their new roles as Eco-ranger team leaders.

Conservation South Africa (CSA) partnership with Yes4Youth to create green jobs

Job creation is one of the key drivers for efforts to improve and diversify rural economies and livelihoods. With the support of private sector partners such as Environmental Resources Management (ERM), Ford and Nedbank, CSA is leveraging on a South African government-led job creation initiative called Yes4Youth (Y4Y) to employ young people from K2C.

Since the inception of the Pro-nature project in 2021, 76 Y4Y have been appointed for a variety of nature-friendly roles including cattle herd monitors, as well as natural resource management workers. The 12 months opportunity has enabled 34 females and 42 males to be trained in, and acquire practical skills in basic animal health, land restoration methods, natural resource management and predator tracking.

Additionally, while enrolled in the national programme, the Y4Y participants have access to a toolkit with mandatory modules on work readiness and enterprise development further upskilling and preparing them for other opportunities post Y4Y.

About Y4Y Programme

A private-sector – government collaboration that transform youth lives, communities and companies by connecting youth to economic opportunity through 12-month quality work experiences. The CV & reference letter they get at the end of their 12-months gives them a 3x greater chance of an interview call-back. <https://yes4youth.co.za/>



Conservation South Africa -

Kruger2Canyons (South Africa)

- Number of cattle currently in the program: **5696**
- Total number of hectares under planned grazing system: **9 500ha**
- Conservation Agreements (CAs) signed in two expansion sites, Clare A (**71** farmers, 28F:33M) and Share (**71** farmers, 19F:52M), Negotiation in Clare B and Eglington
- 3 cattle sales: **Welverdiend B** had 9 sellers who sold a total of 22 cattle, generating R148 912.00, **Clare A** had 5 sellers who sold a total of 13 cattle, generating R99 980.00, **Welverdiend A** had 25 sellers who sold a total of 64 cattle, generating R393 063.00
- **30** (13F:17M) new Yes4Youth appointed in 4 expansion villages (5/village).
- **3** enterprises selected (Waste management, Arts & Craft and an Aquaponic)



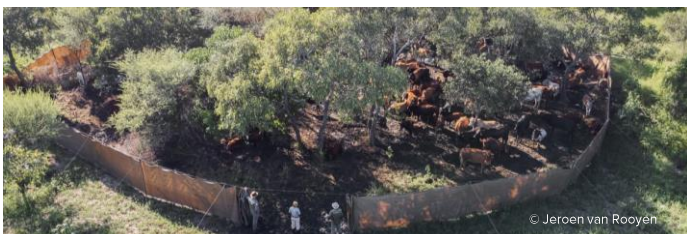
Communities Living Among Wildlife Sustainably (CLAWS) – Eretsha (Botswana)

- Number of cattle currently in the program: **589**
- Total number of hectares under planned grazing system: **5 700ha**
- 12 prospective eco-rangers (4F:8M) attended eco-ranger introductory course from Southern African Wildlife College (SAWC)
- 2 Eretsha eco-rangers attended 1-month long team leader training at SAWC
- Second communal herd in Eretsha 207 cattle, 7 farmers (2F:5M)
- Signed 6 producer agreements for 30 cattle for EU CBT first trial mobile quarantine



Conservation Lower Zambezi – Lower Zambezi (Zambia and Zimbabwe)

- Inception meetings with community representatives, government and other stakeholders in the area
- MOU drafted with Department of Fisheries to formally declare the intent of the Department to promote and support the establishment of a Fisheries Management Area
- Drafting Terms of Reference for Community Fisheries Monitors to be recruited



© Jeroen van Rooyen



Wild Entrust – Habu (Botswana)

- Number of cattle currently in the program: **430**
- Total number of hectares under planned grazing system: **6 360ha**
- 12 new eco-rangers (3F:9M) attended eco-ranger introductory course from Southern African Wildlife College (SAWC)
- 2 Habu eco-rangers attended 1-month long team leader training at SAWC
- Second communal herd in Habu, Boajankwe Cluster 180 cattle, 14 farmers (5F:9M)
- Signed 11 producer agreements for 19 cattle for EU Commodity-Based Trade (CBT) first trial mobile quarantine



Peace Parks Foundation – Simalaha Community Conservancy (Zambia)

- Currently have **75** farmers (3F:72M) signed up as participating farmers
- 4 Grazing area committees formed
- Branding of cattle was conducted in Mapani and Sibbulo Village Action Groups (VAGs)
- Mapping of grazing areas conducted in the Mabumbu/Makanga VAG and a survey of grazing areas conducted in Magumwi and Mapani VAGs

Upcoming Activities

- Continuation of profiling Enterprise Development Opportunities
- Baseline data collection (Social and Ecological) in Lower Zambezi
- CA feasibility Analysis in Kanyemba, Zimbabwe
- Baseline Ecological Data Collection in Simalaha.
- CSP Learning Network Meeting in Tamale, Ghana (6 – 12 November)
- Project Steering Committee Meeting in Accra, Ghana (12 – 14 November)

Contact: Corlé Jansen |
cjansen@conservation.org

