

# CI BOTSWANA GCF PROJECT

## MEDIA AWARENESS WORKSHOP

CI Botswana GCF Project Team – Lame Ramokate

CONSERVATION  
INTERNATIONAL





# PRESENTATION OUTLINE

1. WORKSHOP OBJECTIVES
2. PROJECT BACKGROUND
3. PROGRESS TO DATE
4. CI GRIEVANCE REDRESS MECHANISM (GRM)
5. Q & A



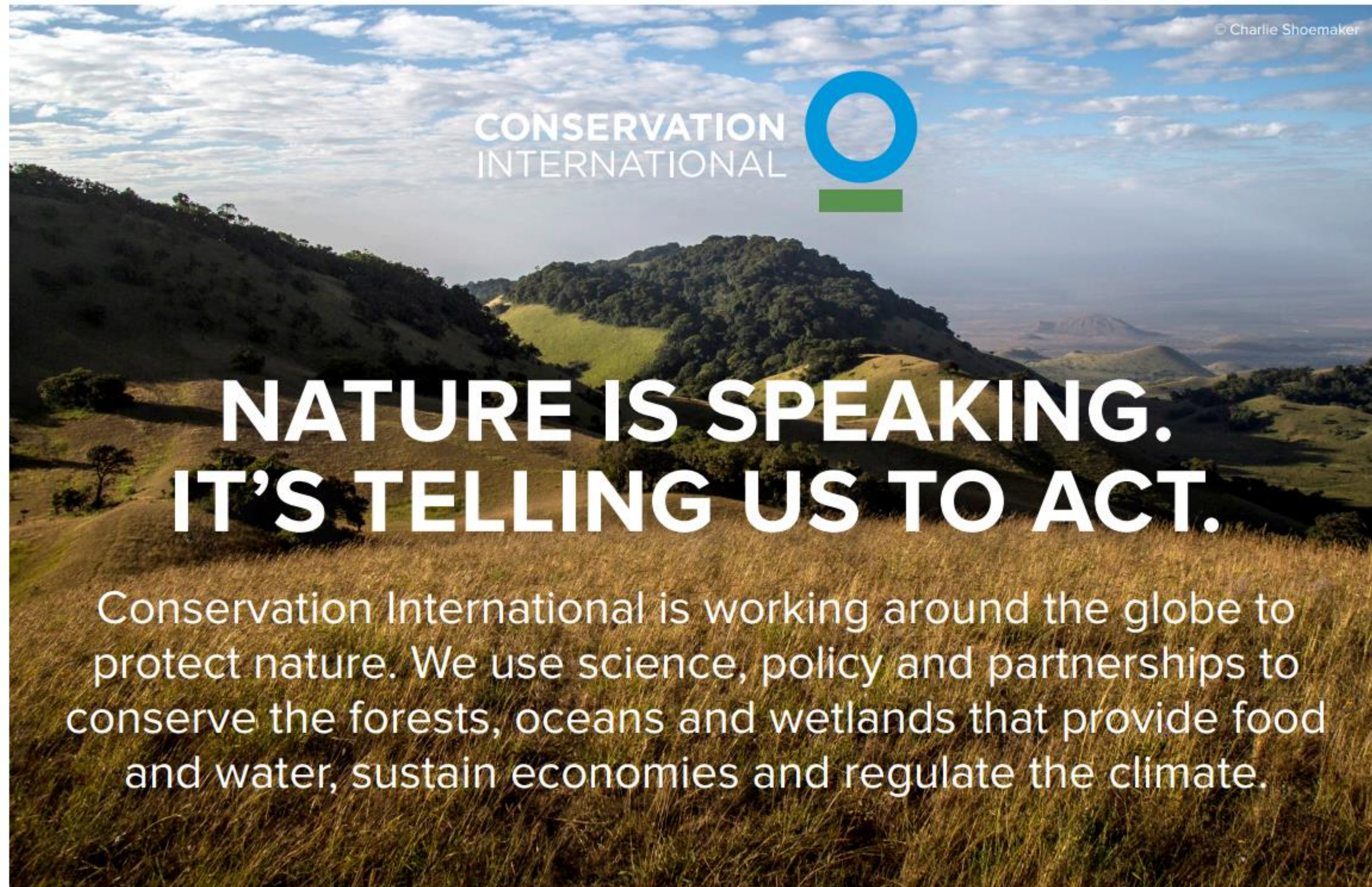
## WORKSHOP OBJECTIVES

1. Appraise media on the CI Botswana GCF project as part of the broader engagement strategy
2. Relationship building for sharing project activities and lessons learnt – one of the largest rangeland restoration project by value and size
3. Generate interest on climate issues and build capacity on climate change resilience





# Who is Conservation International



- Founded in 1987
- Offices in 30 countries

## WHAT WE DO

- Protecting nature for climate
- Conserving our oceans
- Nature-based development
- Innovation in science and finance



# Conservation International Botswana



1993 opened office in Maun to conserve biodiversity in the Okavango delta area. Supported:

- Predator Wildlife Programme
- Cheetah Conservation
- Botswana Zebra Research in Makgadikgadi Pans
- Development of Shorobe Women's Basketry building and cooperative
- Letswee Centres Environment Education Programme.

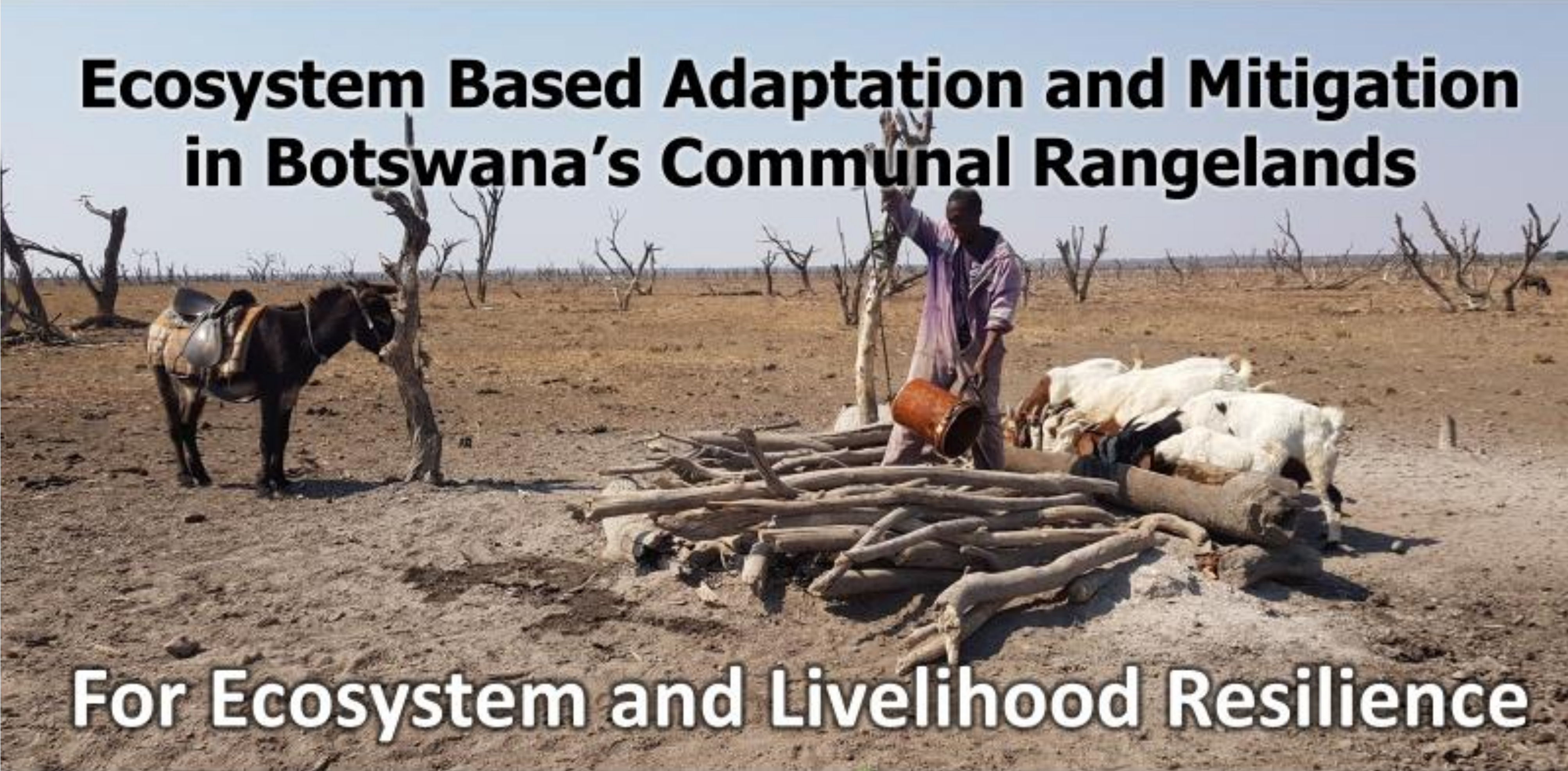
Closed office in 2017 at the end of the funding cycle.

Hosted the Gaborone Declaration of sustainable Africa from 2017 up to 2021 to provide technical and financial support. Office moved to GoB.



# PROJECT BACKGROUND

**Ecosystem Based Adaptation and Mitigation  
in Botswana's Communal Rangelands**



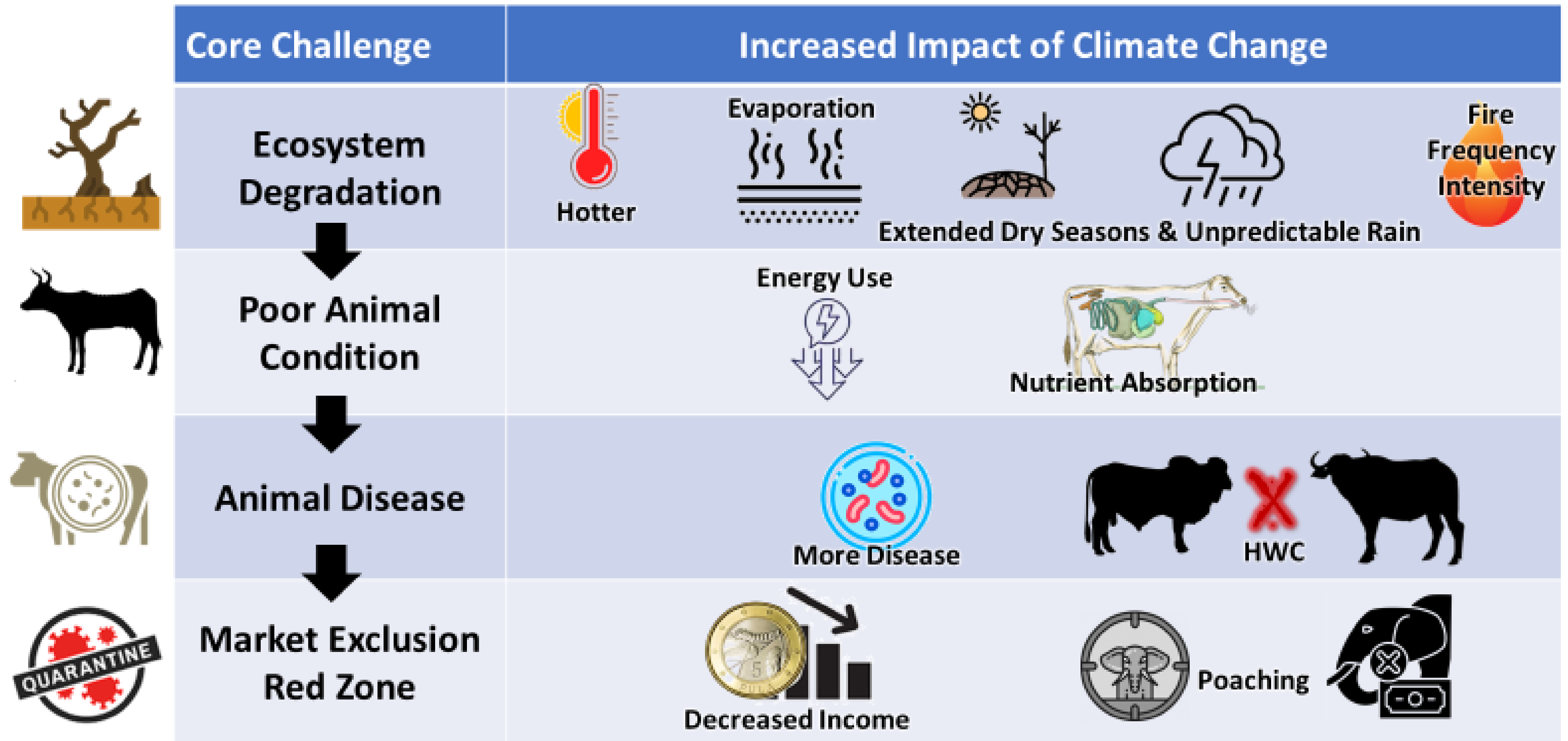
**For Ecosystem and Livelihood Resilience**





# CLIMATE CHANGE IMPACT AND CHALLENGES

## Adaptation to the Impact of Climate Change





# PROJECT CONCEPTUALIZATION



- Concept Note 2017
- Feasibility Study and Consultations 2017-2022
- Funding Project Proposal Approval 2021

## CONSULTATION

- >700 people consulted
- 6 regional workshops
- 15 village level meetings
- Visits and discussions at cattle posts
- 32 institutional discussions (government, academia, researchers, CBOs, donors)
- Validation process (national workshop)



REPUBLIC OF BOTSWANA



GREEN  
CLIMATE  
FUND



# PROJECT GOAL

To increase the adaptive capacity of the people of Botswana to respond to the negative impacts of climate change in communal rangelands

## PROJECT OBJECTIVES

- 1 Strengthen institutions and support systems for climate-responsive planning and management in communal rangelands (adaptive)
- 2 Reducing GHG emissions and negative livelihood impacts through rangeland rehabilitation and improved livestock management (mitigation) and
- 3 Sustain enhanced adaptive capacity and low-emissions development through value-chains and policy transformation.





# Challenge in communal rangelands & wildlife-livestock interface

The problems are complex, dynamic and multidimensional  
YET

The solution is simple and practical & traditionally acceptable

**Strategic Herding  
& Kraaling**

**Herding 4 Health Programme**



**HERDER EMPLOYMENT FOR  
ECOSYSTEM RECOVERY  
& ECONOMIC ACTIVITY**

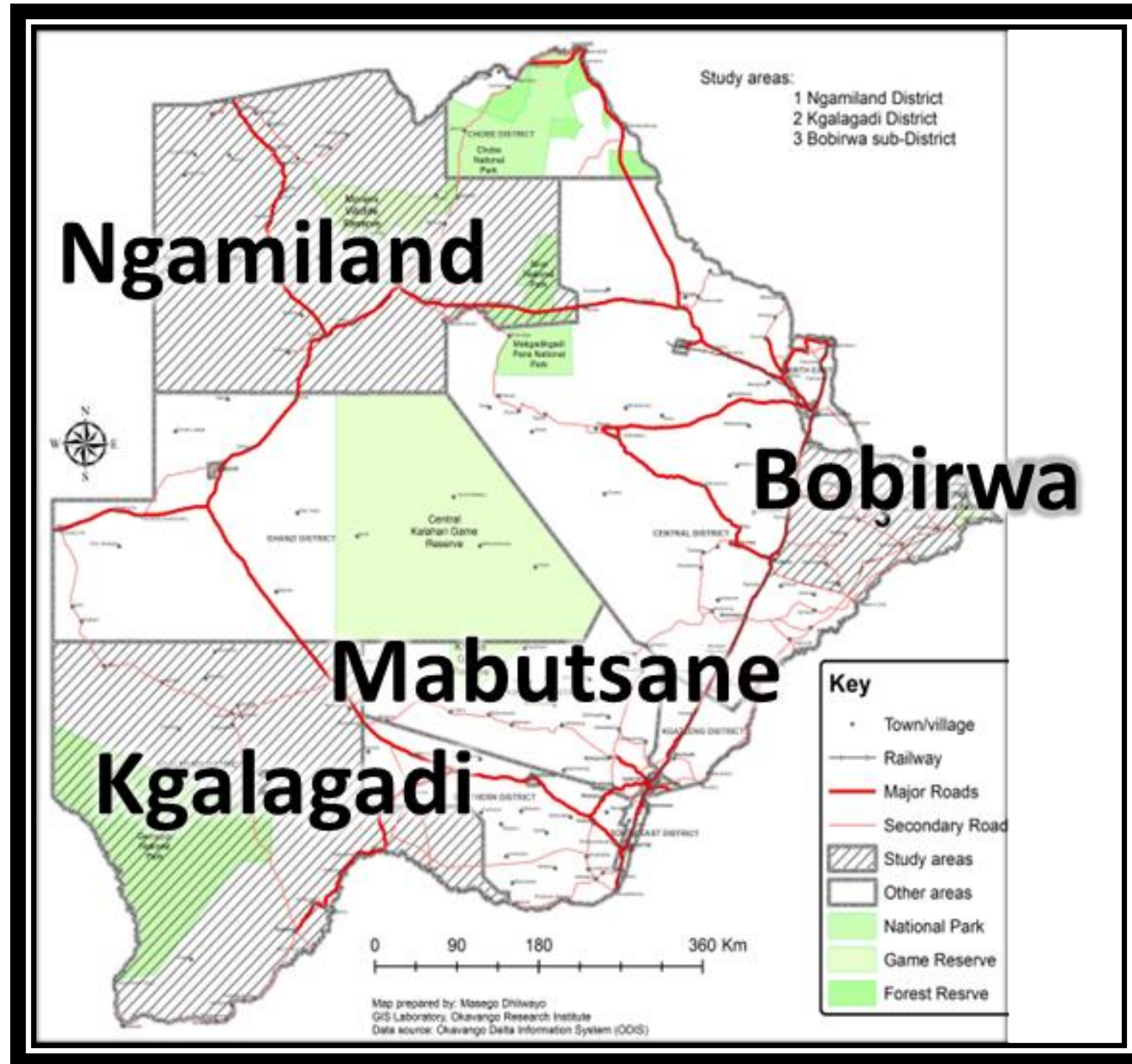


# PROJECT SCOPE

8.5 Years (starting from 2022)

3 Project areas → 6 Districts

104 Villages

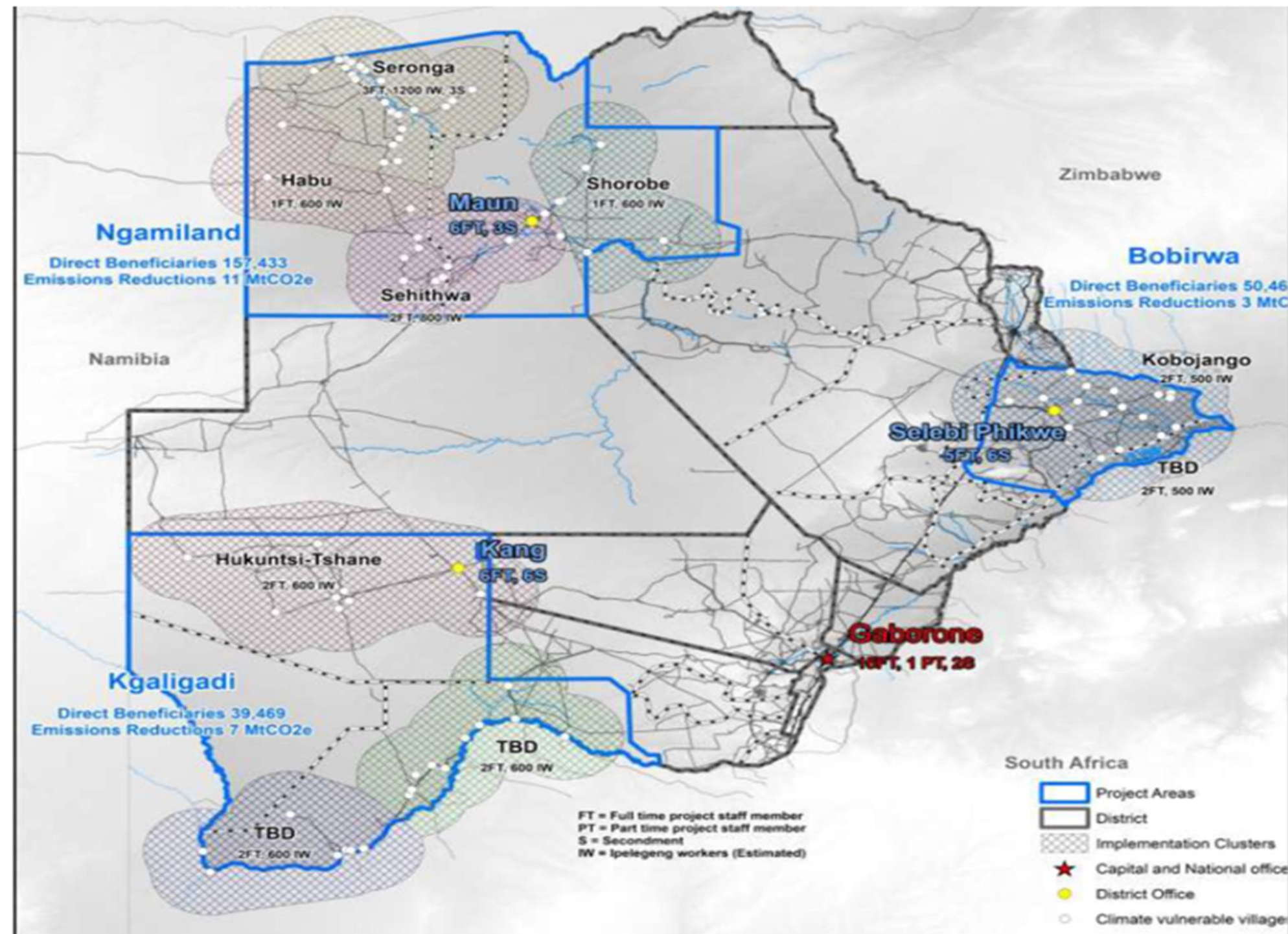


Output		GCF Budget	GoB Budget
<b>Component 1: Strengthening Institutions and Support Systems</b>			
1.1	Equitable Structures & Systems	\$4,877,366	
1.2	Job Creation Programme & Veterinary Services Investments	\$4,125,816	
1.3	Rangeland Management Curriculum Development & Operationalisation	\$2,332,396	
1.4	Operationalisation of Rangeland Monitoring System	\$2,387,506	
1.5	Improve GoB Policy Initiatives on Climate Change Management	\$55,864	
<b>Component 2: GHG Emissions Reductions and Improved Livelihoods</b>			
2.1	Jobs Creation & Resourced Social Safety Net Programmes		\$54,013,000
2.2	Ecosystem Rehabilitation and Improved Land Management	\$14,582,168	
<b>Component 3: Climate-Sensitive Enterprise Development &amp; Value Chain</b>			
3.1	Building Enabling Conditions for Improved Low-Emissions Value Chain and Economic Resilience	\$3,393,789	
3.2	Private Sector Partnerships & Sustainable Financing	\$913,209	
<b>TOTAL</b>		<b>37,323,000</b>	<b>54,013,000</b>





# WHERE WE WORK – PROJECT AREAS



Three Project Areas: **Ngamiland** (North West and Okavango District); **Kgalagadi** (Tsabong, Hukuntsi & Mabutsane Districts), **Bobirwa** (Bobirwa District)

104 Village Grazing Areas: 52 North West, 27 Kgalagadi, 16 Bobirwa and 9 Mabutsane

## NINE CLUSTERS & Demonstration/Pilot Sites:

1. Ngamiland Area (4 clusters) - Eretsha, Habu, Sehithwa, Shorobe villages
2. Kgalagadi Area (2): Tshane, Hukuntsi, Lehututu  
Mabutsane Sub District (1): In phase 2 & 3
3. Bobirwa Area (2): Mathathane, Gobojango or Tobane

**Management in Three Project Areas:** Area Managers, Operations Teams (Implementing Partners (NGOs, Trusts, etc), VDCs, Farmers Facilitation Teams, DFRR and MoA support)



# PROJECT IMPACTS



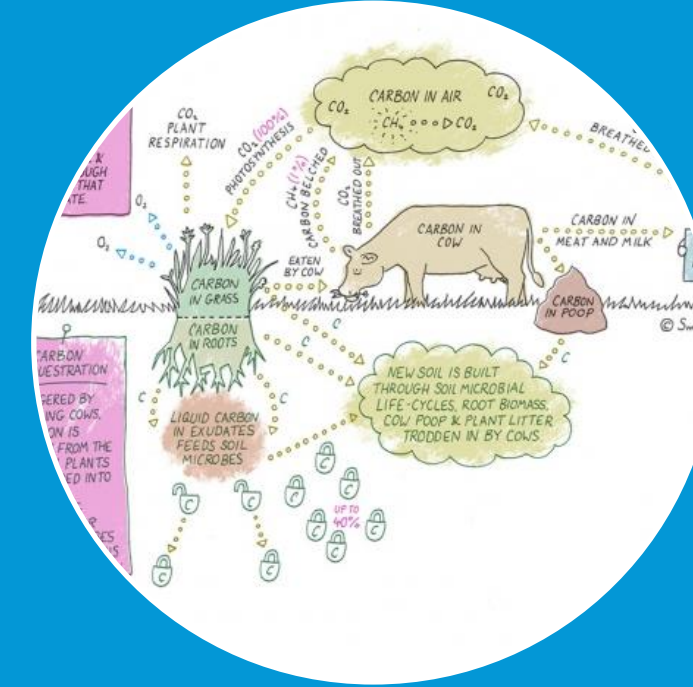
## Green Job Creation

**6000 Ecorangers,  
Restoration Workers  
and Graduate  
Monitors Employed**



## Restoration of Rangelands

**46,000km<sup>2</sup>  
(4.6 million Ha)  
improved  
rangelands**



## Emissions reduction

**4.7 MtCO<sub>2</sub>eq  
emissions avoided  
(47% National 2030  
Emission Reduction  
Target (NDC))**



## Sustainable economic development

**Household Income  
Improvement & Value  
Chain Transformation  
benefitting 247,000  
(54% being women)**

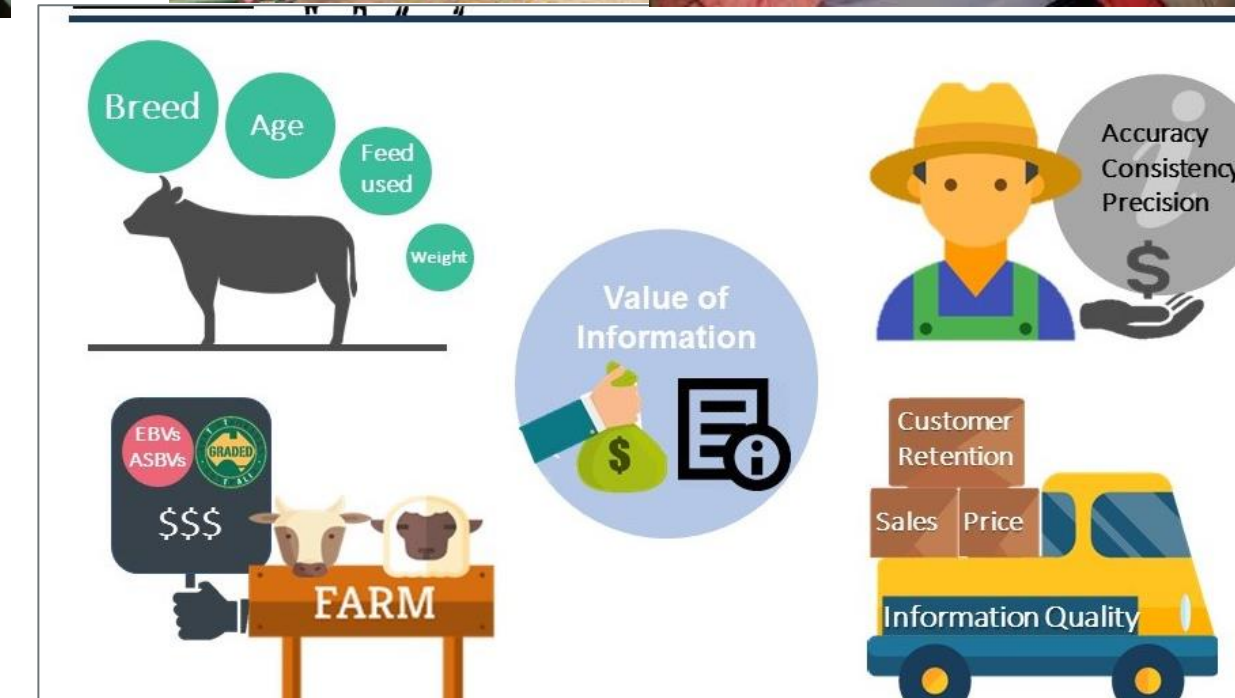
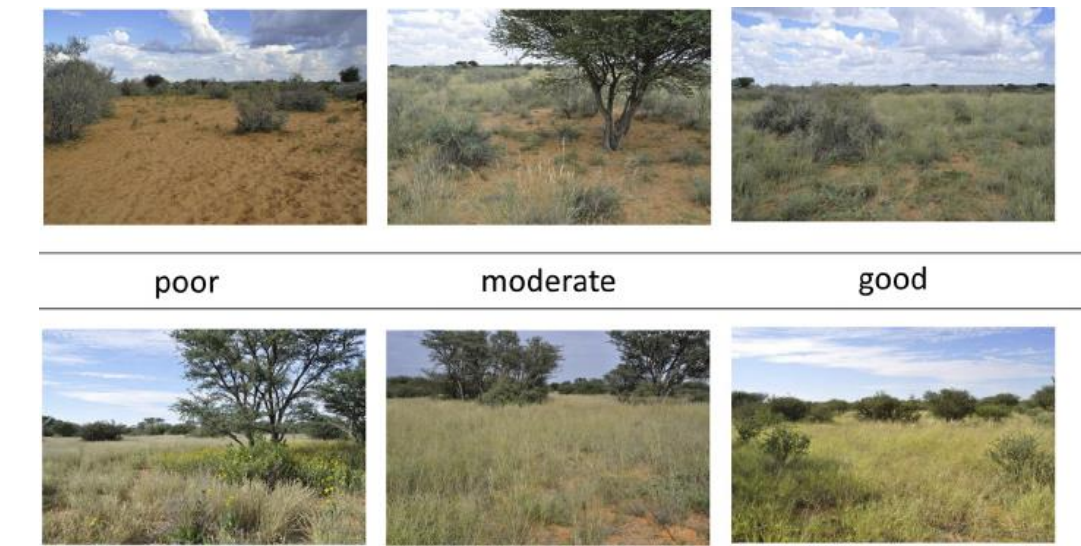
Building resilience to climate change





# THE PROJECT WILL BRING TRANSFORMATION AND INNOVATION ...

- **Re-purpose of Ipelegeng programme** from social safety net to agricultural GDP catalyzer that reduces risk of climate shocks and long-term impacts through skilling
- **Create professional qualification for EcoRangers** that focus on climate impact management and proactive mitigation strategies (curriculum development)
- **Restore rangelands to improve livestock condition**, drought resilience, reduction of human-wildlife conflict, and low-carbon agricultural development – regenerative grazing
- **Empower women and youth in livestock sector** and investment in rural child development and indigenous knowledge systems as part of safeguards
- **Unlocking livestock value chains** and new private sector investments in climate-resilient supply chain opportunities from local to national scale





# IPELEGENG SKILLS DEVELOPMENT COMPONENT (ISDC)

## ECORANGERS



Courtesy of BWGovernment Facebook 2023

All employed EcoRangers must be from the community where they work



Courtesy of Prof. J. Von Rooyen 2022



Courtesy of BWGovernment Facebook 2023





# RESTORATION WORKERS



- Land restoration
- Bush clearing
- Erosion control
- Restoration mat productions

=> Opportunities for women and elderly

All employed Restoration Workers must be from the community where they work



# Graduate Monitors

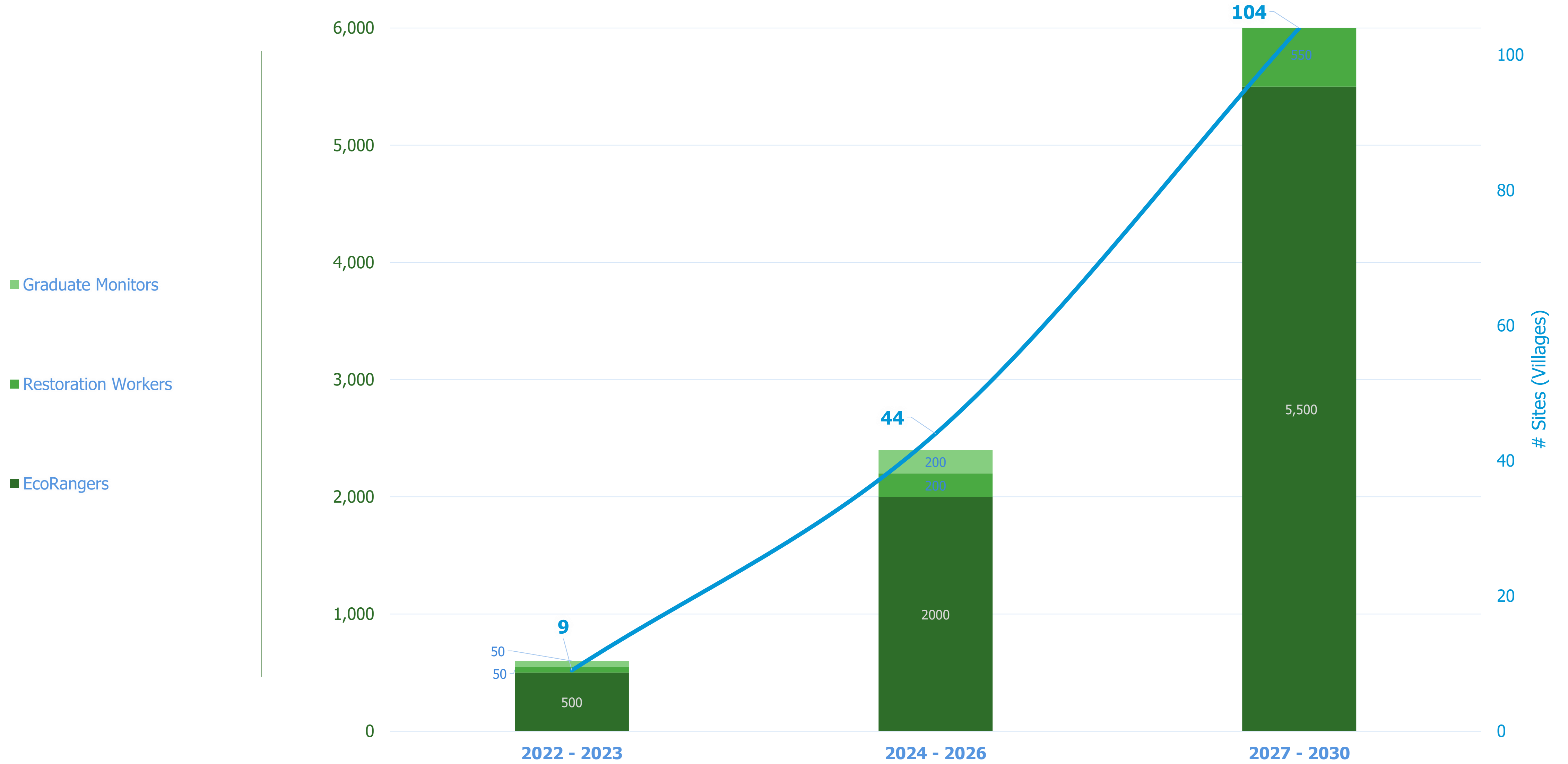


- ✓ Youth employment opportunity through National Internship programme (Interns)
- ✓ Must have a minimum diploma in Social, Environment, or Agricultural Science fields
- ✓ Focus on data entry , but will be provided an opportunity to participate in developing and presenting papers on the Project M & E at regional scientific forums through the Project as career-building opportunities
- ✓ To be placed in strategic departments and institutions





# Scaling over 8 years (2022 - 2030)





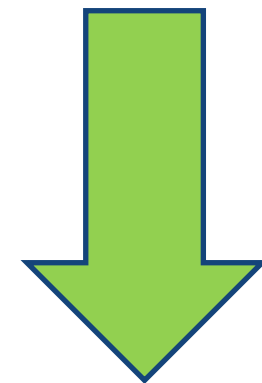
# COMMUNITY ENGAGEMENT TOOL

**Conservation Agreement model:** specifies conservation actions to be undertaken by the resource users (communities) and benefits that will be provided in return for those actions

**Rangelands Stewardship Agreements (RSAs)** An incentive-based participatory approach to work with communities to conserve natural resources.

**Aim:** cultivating stewardship of natural resources by the communities at the same time channeling tangible benefits that improve their livelihoods (individual and collectively)

==> to support implementation of conservation actions that are driven by the people to benefit from healthy ecosystems that they rely on – supporting the **Herding for Health Approach: Collective herding & kraaling**



**PROJECT GOAL:** To sustain enhanced adaptive capacity through value-chain and policy transformation in promoting the livestock value-chain ==> **To increase climate-resilient sustainable development**





# Project Stakeholders

GoB	Local Partners	CI & Partners	Other Partners
<b>MoF (NDA)</b>	Local Authorities	CI GCF Agency	EU
<b>MoA (Lead)</b>	Farmers	GCF	GiZ
<b>MET</b>	Associations/ Committees	Peace Parks Foundation	UN Agencies (FAO, UNDP, etc.)
<b>MLWA</b>	NGOs / Civil Society	Southern African Wildlife College	Conservation Partners (e.g., EPI)
<b>MLGRD</b>	Academia (i.e., BUAN–CICE, UB/ORI, Private Universities. etc.)	Herding Academy	AHEAD
<b>MLHA</b>		Local Implementing Partners	Etc
<b>MTI</b>		Etc	
Other gov't institutions	Private Sector Etc.		



# Livestock Value Chains – Enterprise Development

**New Market Access** – to grow local level economies and improve livelihoods. Capacity building on entrepreneurship development and training to project beneficiaries to enhance their skills to uptake business opportunities within the Livestock value-chain.

## Examples

- ✓ Natural Fodder production
  - ✓ Fire management
  - ✓ Hides and skins
  - ✓ Quality beef production
  - ✓ Veterinary enterprises
  - ✓ Equipment & uniform production and maintenance
  - ✓ WIFI Hub Management
  - ✓ Marketing – organic grassfed premium branded beef
- Providing core business/market readiness skills to facilitate linkages to financial institutions and other investments.
  - Key stakeholder BMC, CEDA, LEA, Meat Naturally Botswana, etc to provide strategic guidance on the focal sector.



# PROGRESS TO DATE

- ✓ High level engagement with key partners
- ✓ Project launch
- ✓ Project District Staff deployed
- ✓ Review National policies and laws relevant to rangeland stewardship agreements on communal land in Botswana / Development of Rangeland Stewardship Template
- ✓ Socio - ecological baseline survey undertaken
- ✓ Inception workshop
- ✓ Behaviour Change Design Training and Farmer Facilitation Training
- ✓ Community engagements in project areas continue
- ✓ PSC introductory meeting





# AREAS OF COLLABORATION

1. REGULAR MEDIA ENGAGEMENTS
2. SITES VISITS IN PROJECT AREAS TO APPRECIATE PROGRESS
3. JOINT FOR A TO EDUCATE PUBLIC ON CLIMATE CHANGE ADAPTATION
4. SHARING LESSONS LEARNT





# CI Grievance & Redress Mechanism



## General Information:

Project link: <https://www.greenclimate.fund/project/fp158>

## Contacts

Email: [Imodisa@conservation.org](mailto:Imodisa@conservation.org)/[gcfbotswana@conservation.org](mailto:gcfbotswana@conservation.org)

Tel: +267 3111188 (Country Office)/ 3924004 (Project Office)

## Any problems? Contact CI:

[tbantsi@conservation.org](mailto:tbantsi@conservation.org) (in Botswana)

[grievance@conservation.org](mailto:grievance@conservation.org) (CI Global Office in United States)

## Want to remain anonymous or something sensitive?

<https://secure.ethicspoint.com/domain/media/en/gui/10680/index.html>

or <https://secure.ethicspoint.com/> and choose "Conservation International Foundation"

Or by phone: **Reverse Charge Calls / Collect Calls to +1 503 748 0567**

In case we don't get back to you, you can contact GCF Secretariat's Independent Integrity Unit: <https://iiu.greenclimate.fund/>







## **CONTACTS:**

### **CI-GCF Botswana Project: Ecosystem Based Adaptation and Mitigation in Botswana's Communal Rangelands**

Conservation International

Plot 54354, North Block, 3<sup>rd</sup> Floor

Central Square Offices, New CBD

Gaborone, Botswana

Tel: +267 3111 188/ 3924004 (Project Office)

Email: [gcfbotswana@conservation.org](mailto:gcfbotswana@conservation.org)

Website: [www.conservation.org](http://www.conservation.org)



# THANK YOU



**“Botshelo ja Motswana ke Kgomo”**