

PRO-NATURE ENTERPRISES FOR THE PEOPLE OF SOUTHERN AFRICA

ERETSHA VILLAGE, BOTSWANA | CLAWS

OVERVIEW

CLAWS (Communities Living Among Wildlife Sustainably) is a Botswana registered non-profit organization tackling issues of human/wildlife conflict in the northeastern panhandle of the Okavango Delta. It was initially established in 2014 as a community engagement program “Pride in Our Prides” to develop innovative approaches that promote co-existence between communities and lions after increased incidences of lion poisoning in the area because of livestock predation. Presently, CLAWS works in the heart of Kavango-Zambezi Trans-frontier Conservation Area (KAZA TFCA). The Eretsha community falls within a Wildlife Management Area that buffers the northern side of the Okavango Delta World Heritage Site. Traditionally, these communities in northern Botswana were pastoralists.

In April 2019 CLAWS established a pilot communal herd, which currently has over 250 cattle, brought together by cattle owners from the Eretsha community to promote livestock husbandry and reduce the livestock predation thus mitigating retaliatory killings. Further, CLAWS has developed a fully automated Lion Alert System that delivers real-time warnings to villagers when collared lions approach to within 3 km of their homestead.

The Pro-nature Enterprises for the People of Southern Africa will enable the replication of the pilot communal herd to include the entire livestock herd within Eretsha community. The community through project support will employ trained herders to oversee the communal herds and predator-proof bomas will be provided to reduce predation incidences. Farmers will also be trained on improved livestock husbandry practices. Under a conservation agreements framework, compliant farmers will also receive veterinary materials incentives. A complementary project funded by European Union will support livestock market access for farmers complying with their conservation agreements commitments.

PROJECT IMPLEMENTER

CLAWS (Communities Living Among Wildlife Sustainably)

SIZE OF AREA

7,500 hectares

NUMBER OF BENEFICIARIES

500 people/50 households

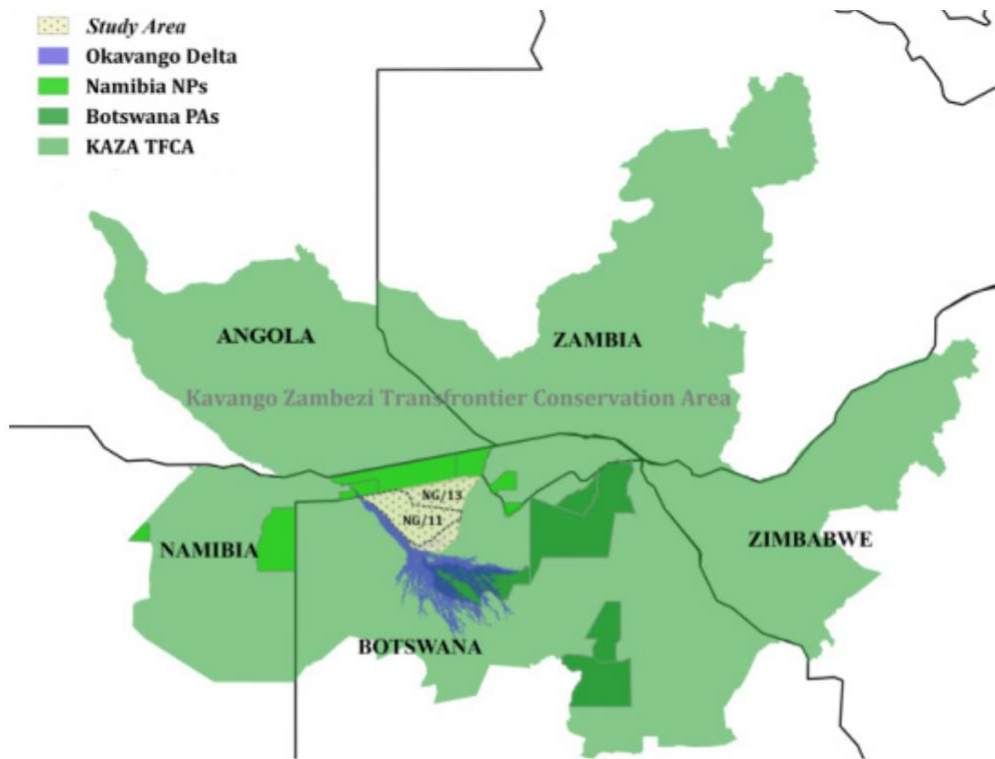
THREATS

- Overgrazing
- Human/wildlife conflict
- Poor livelihoods
- Biodiversity loss and food insecurity as a result of climate change

OTHER PARTNERS

- European Union
- Department of Veterinary Services
- Department of Wildlife and National Parks
- Village Development Committee
- Department of Animal Production
- Department of Forestry and Range Resources
- Tourism Operators





INDICATORS TO BE TRACKED

- Restoration of vegetation cover and vegetation diversity of rangelands
- Improved livestock quality
- Reduction in human-wildlife conflicts due to predation and competition for pastures
- Number of livestock keeping households adopting climate smart livestock systems
- Number of people that are fully employed and partly employed to provide tourism and conservation related services
- Number of people benefitting from nature-friendly enterprises including sustainable livestock, tourism and agriculture (disaggregated by gender)



Contact

DR. ANDREW STEIN | andrewstein@clawsconservancy.org

www.clawsconservancy.org

This document benefits from the support of the French Development Agency. However, the ideas and opinions presented do not represent necessarily those of AFD.

PHOTOS COURTESY OF CLAWS